

SCHEDA A

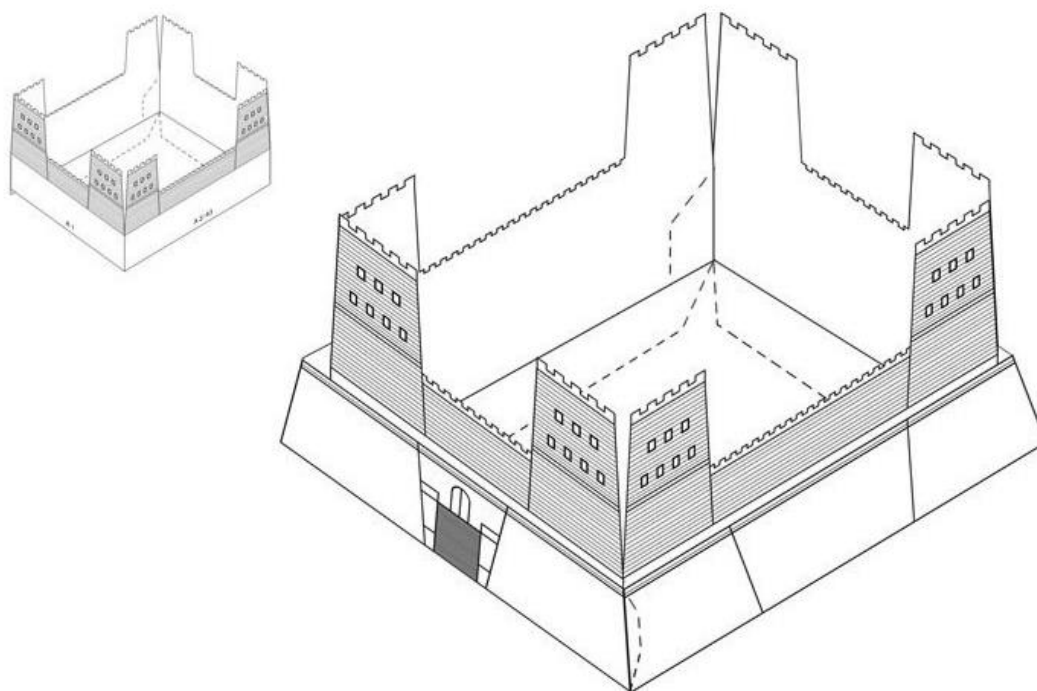
Fortezza Antonia e Casa di Caifa

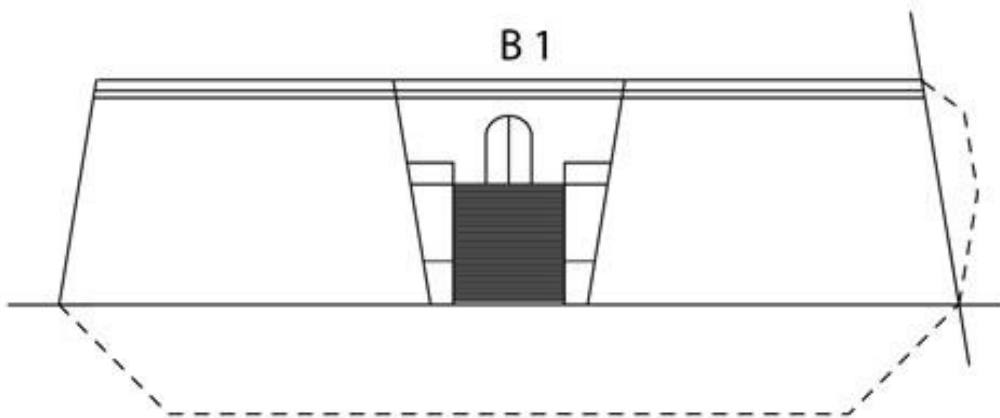
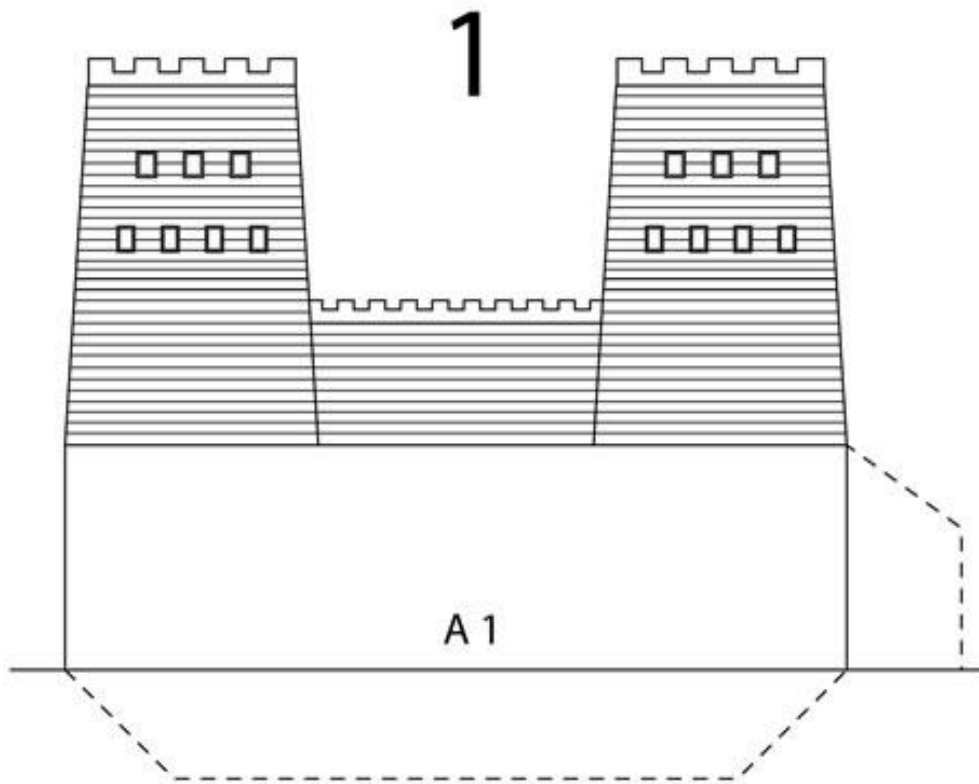
Ricostruisci i modellini della Fortezza Antonia e della Casa di Caifa

Per costruire i due modellini, ritaglia e piega lungo le linee le figure. Poi piega le linguette alla base delle stesse e quelle laterali; incolla queste ultime tra loro per chiudere i singoli edifici. Puoi arricchire il tuo modellino con l'immagine del sacerdote Caifa.

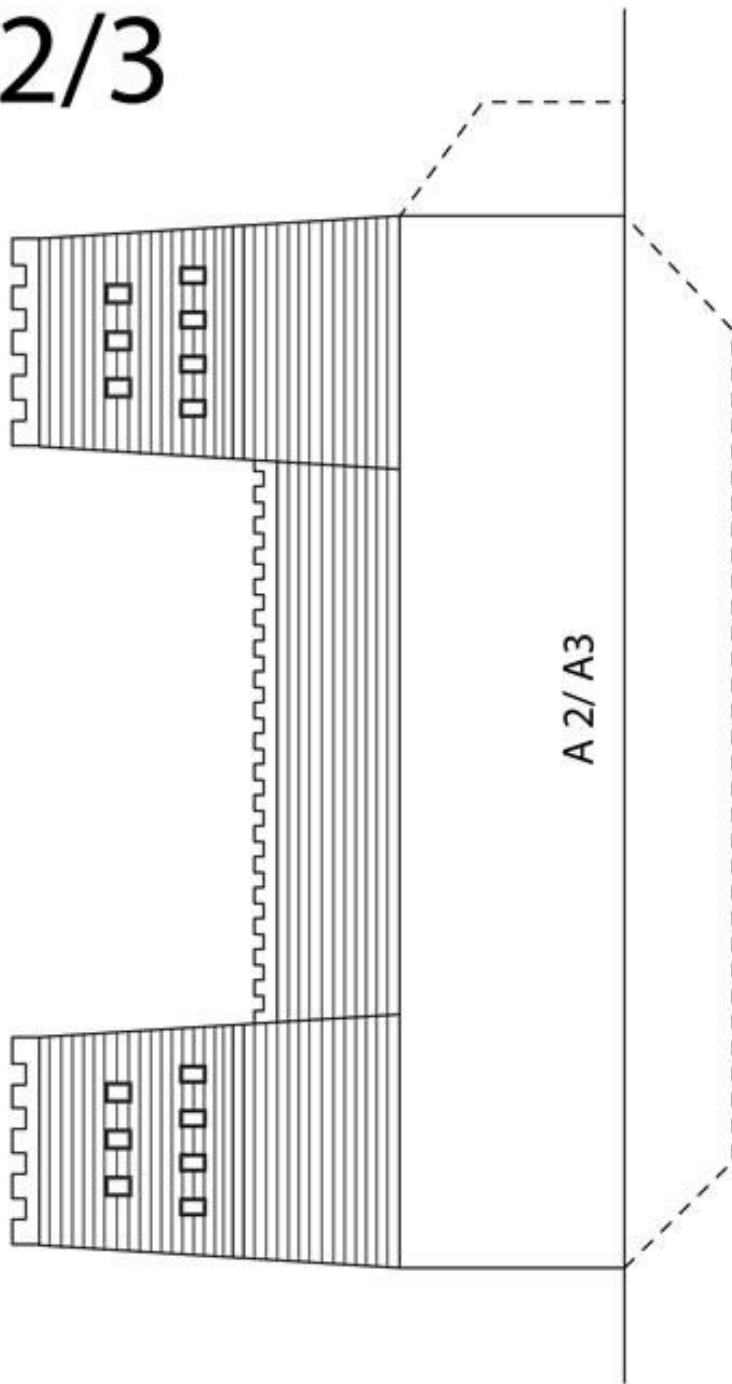
Fortezza Antonia

Ricostruiscila come in questo esempio, utilizzando i modellini che trovi nelle prossime pagine

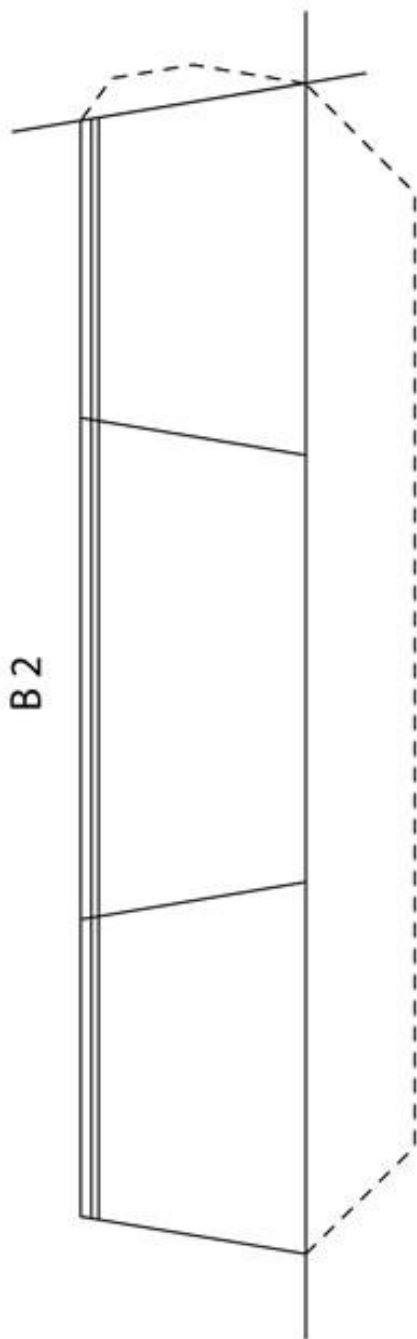




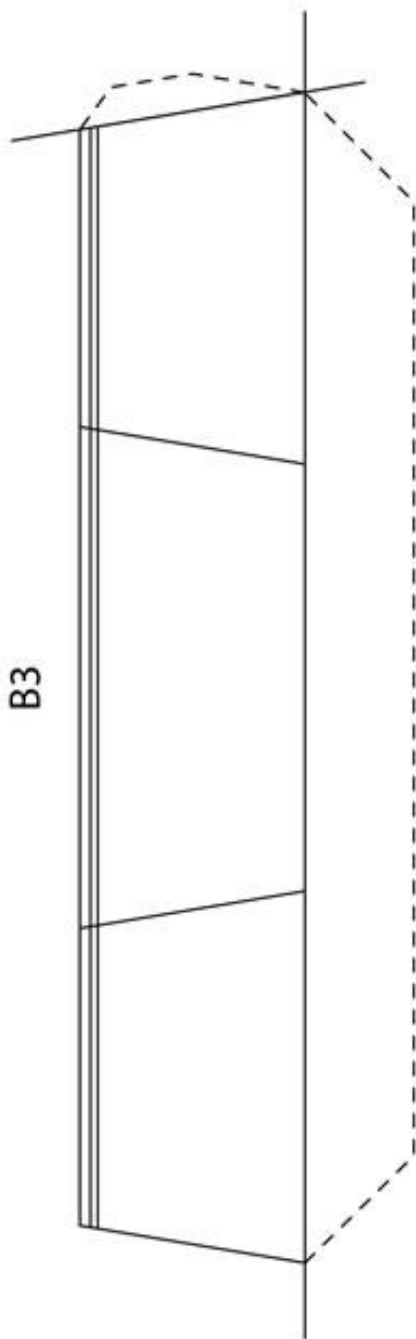
2/3



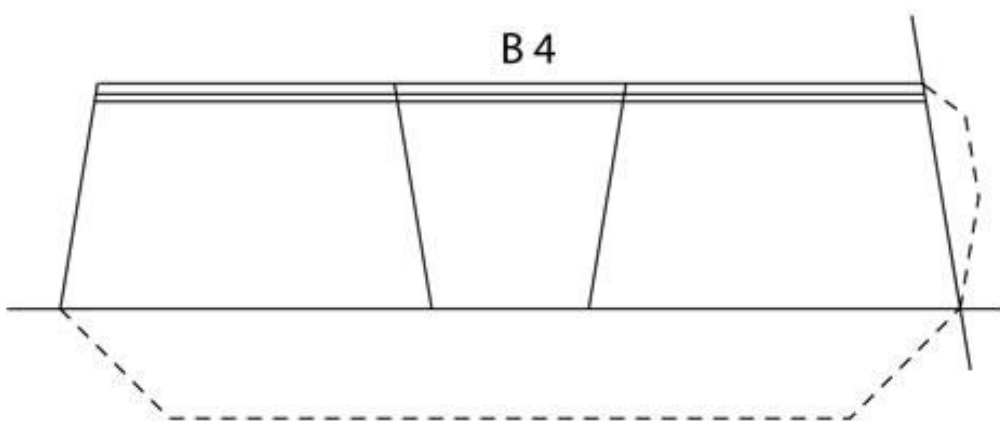
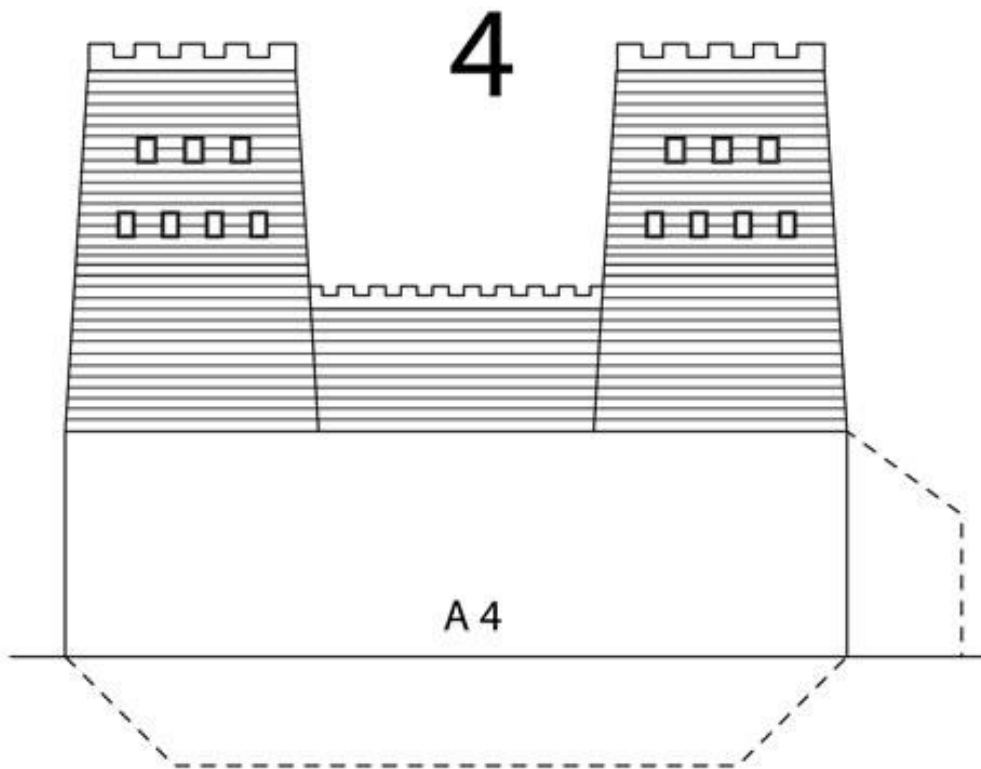
© Rizzoli EDUCATION - fotocopiabile



B 2

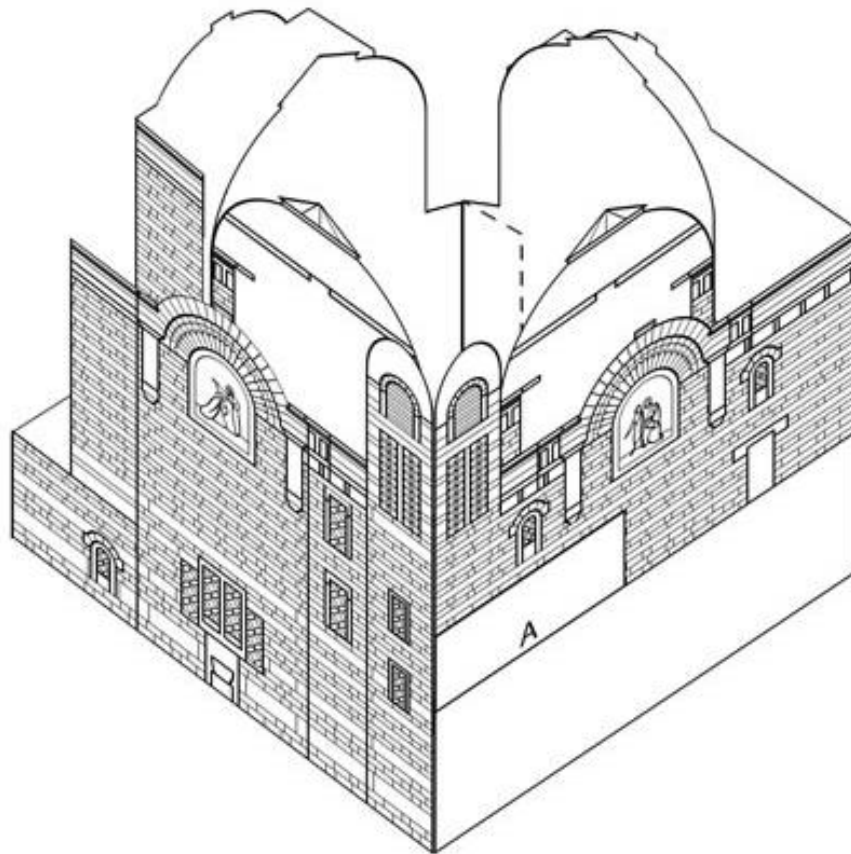
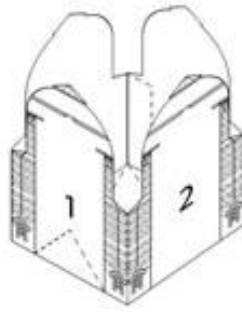


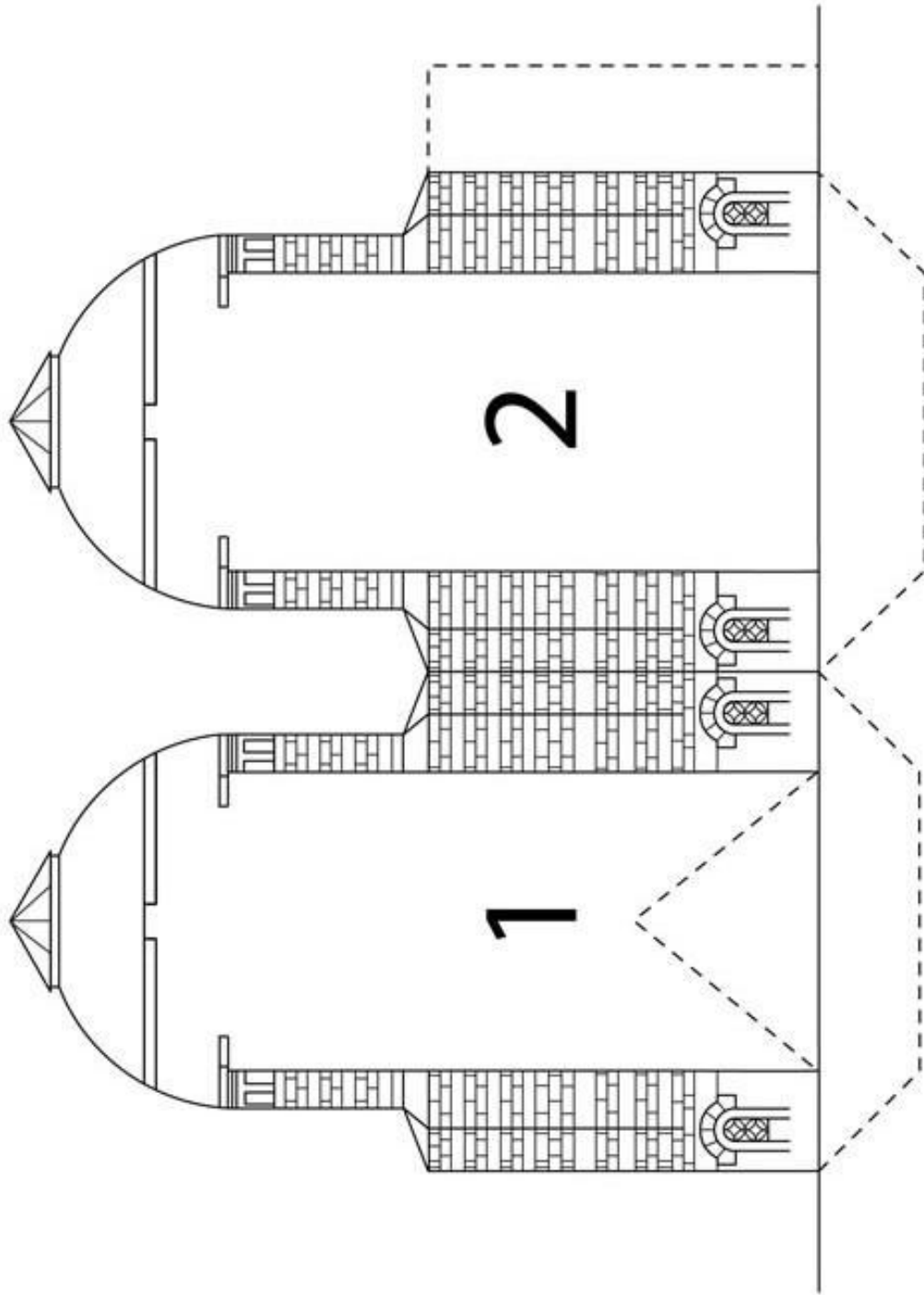
B 3

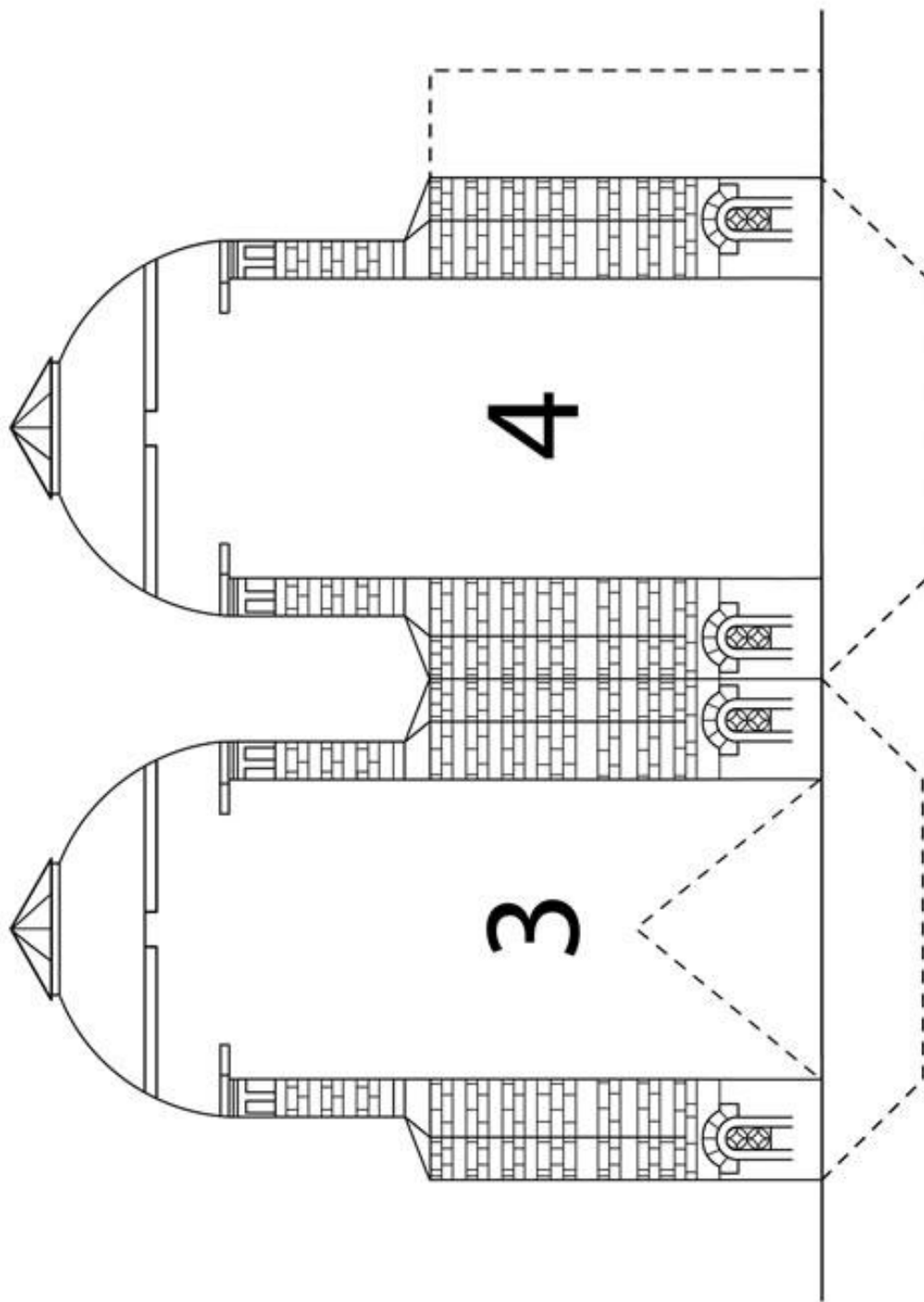


Casa di Caifa

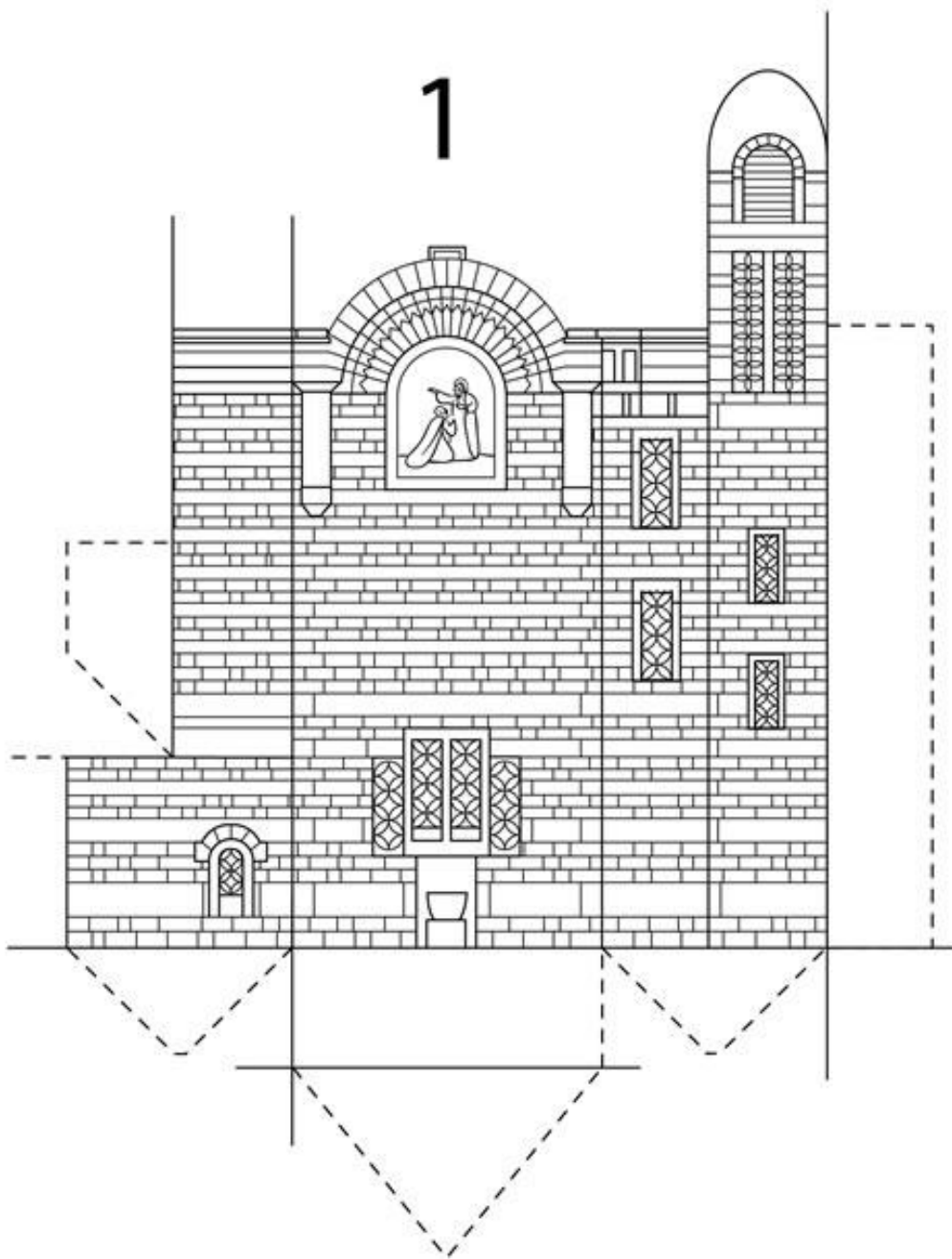
Ricostruiscila come in questo esempio, utilizzando i modellini che trovi nelle prossime pagine e arricchendola con l'immagine del sacerdote.

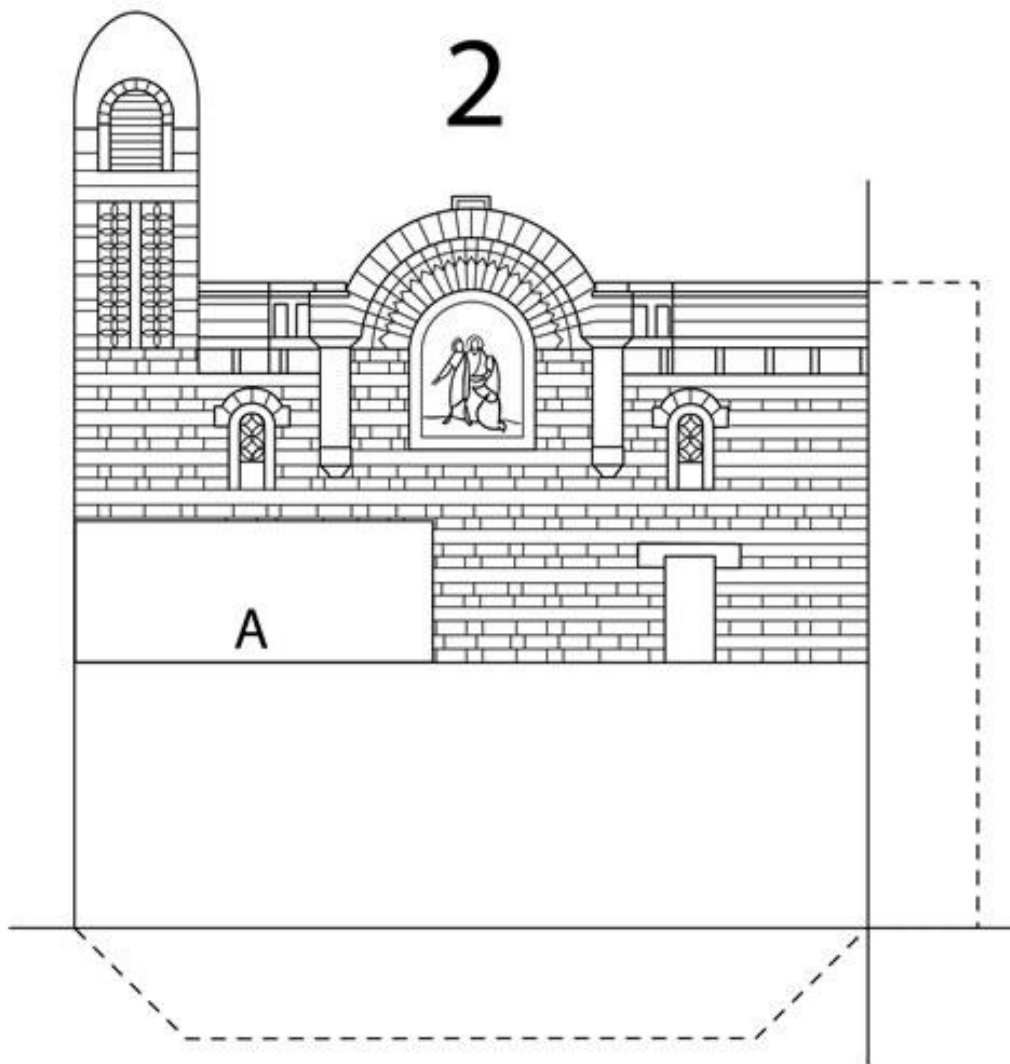


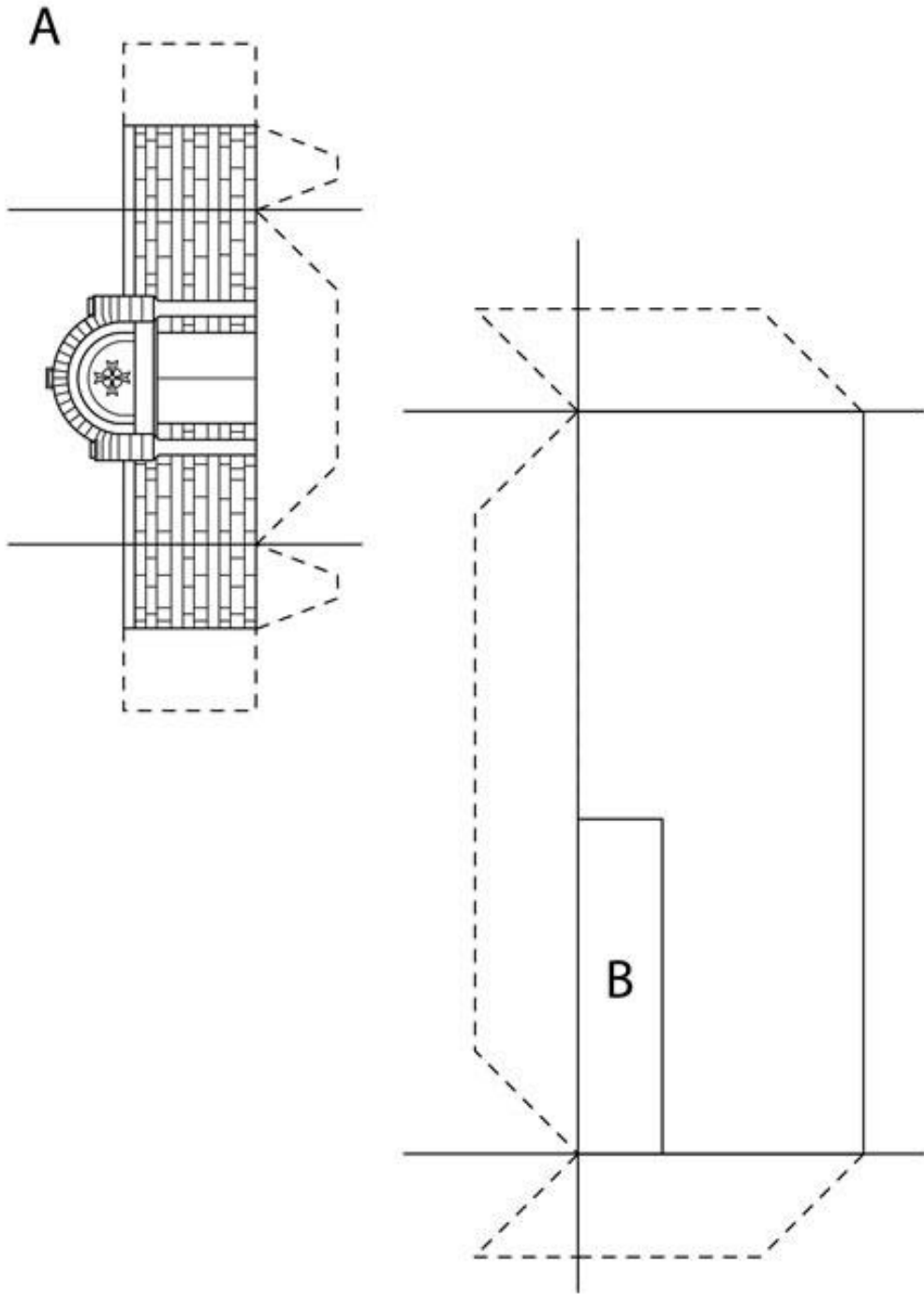




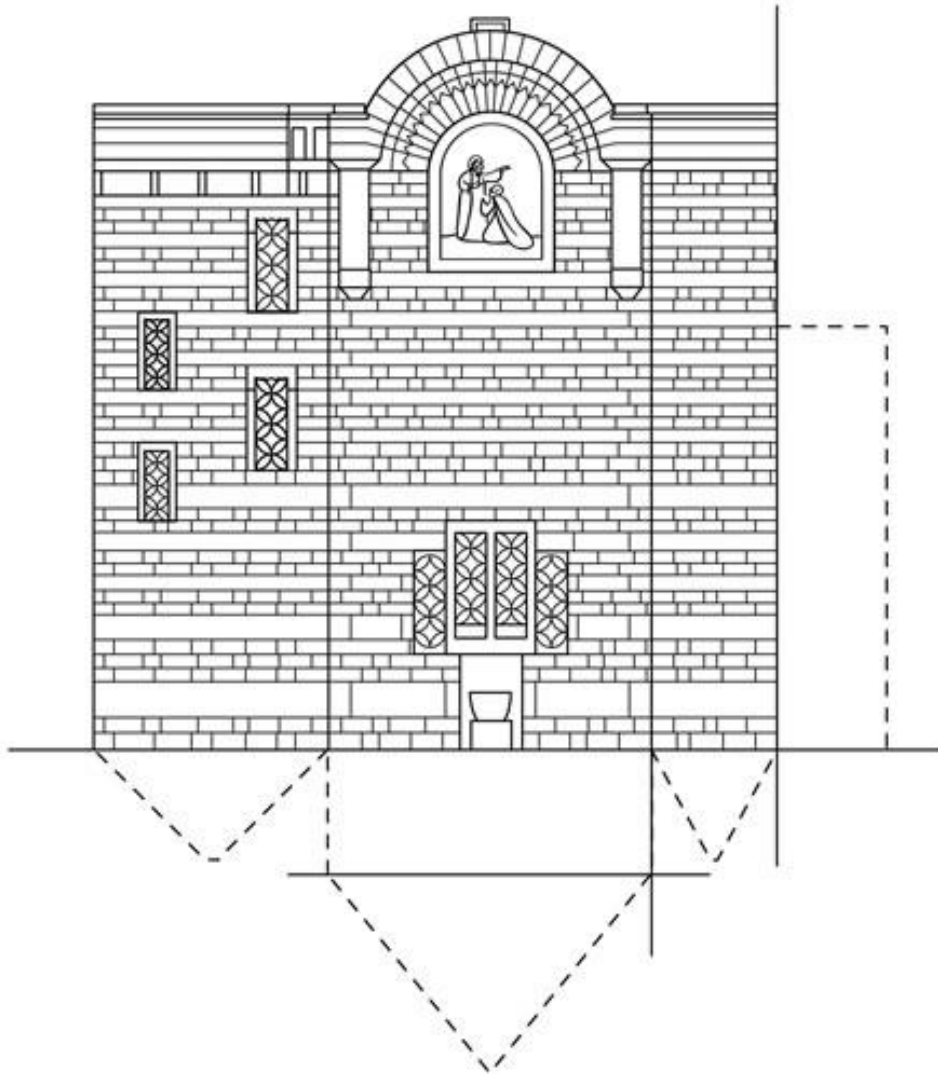
© Rizzoli EDUCATION - fotocopiabile







3



4

